



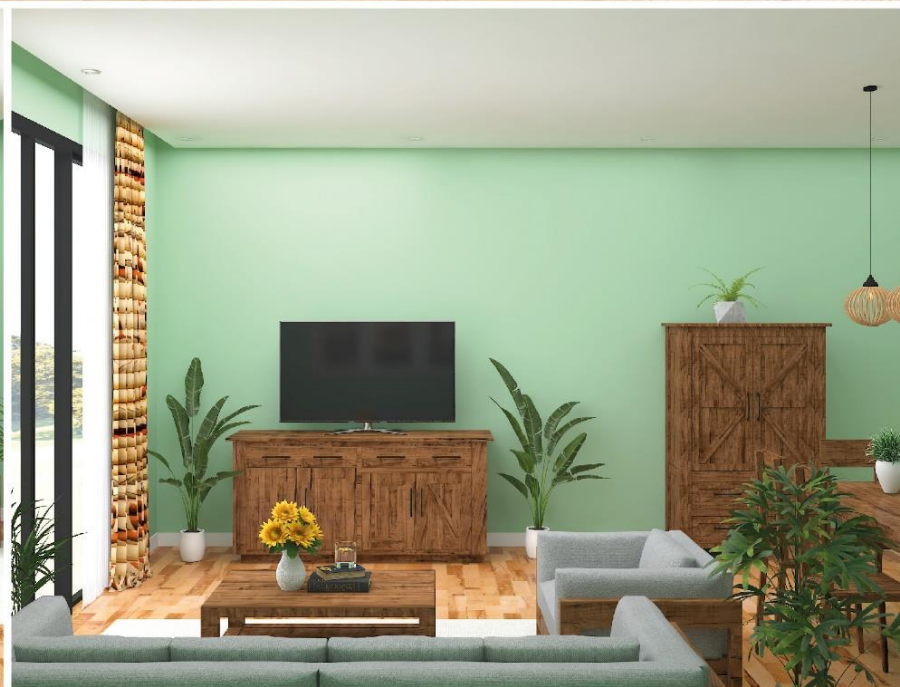
# Sustainable Hospitality

— for a responsible tourism —





## Guesthouse-Living Room



- ❖ To reduce energy consumption, our room sensors automatically detect light levels and adjust the bulb brightness.
- ❖ Thermostats with occupancy sensors adjust heating and AC temperatures. In addition, our guests can connect to room amenities and adjust settings remotely.
- ❖ All furniture is custom-made from reclaimed wood.
- ❖ Our rooms are painted with nontoxic, chemical-free paint. For decoration elements, we use eco-friendly materials, such as bamboo, organic fabrics, and reclaimed and recycled wood and leather.



## Guesthouse- Bedroom



- ❖ To save water and energy and reduce detergent use, we encourage our guests not to change linen every day.
- ❖ Our bedrooms are equipped with recycle bins.
- ❖ We encourage our guests to enjoy their breakfast at custom-made “breakfast corners” in the bedroom or the living room.
- ❖ To reduce the use of straws, plastic serveware, and paper plates and minimize waste, we use glass containers instead of single-use cereal, yogurt, and jam packages.



## Guesthouse-Bathroom



- ❖ Supporting a no-plastic environment, we provide reusable glass bottles and biodegradable liquid containers. All rooms are equipped with water glasses or ceramic mugs.
- ❖ Our bathrooms have additional towel racks to make it easy to reuse towels and reduce water consumption.
- ❖ Our bathrooms are equipped with compost bins and chemical-free, 100% organic toiletries.
- ❖ The showers are equipped with aerating showerheads that save water and use far less energy.
- ❖ Our sinks are equipped with automatic faucets.

# Activities & Décor Highlights

- ❖ To cut down on paper use, we offer the option to check in and out remotely. Guests are welcome to request more information and are invited to join our daily activities during their stay, all linked to the 17 Sustainable Development Goals (SDGs), a blueprint to a better and sustainable future.
- ❖ For more information on daily activities and the SDGs, the program is available at the front desk and on the chalkboard in the living room.
- ❖ We encourage eco-friendly transportation methods. Our guests are free to use the bicycle available in each room.

## Highlights

- ❖ Solvent-free organic wall paint without chemicals, toxins, or additives
- ❖ Custom-made furniture from reclaimed wood
- ❖ Décor elements made from reclaimed leather and organic materials
- ❖ Eco-friendly bamboo curtains
- ❖ Marble flooring to keep the bathrooms cool
- ❖ Reclaimed wood flooring in the living rooms and bedrooms
- ❖ Artwork purchased locally
- ❖ Natural stone used in the shower cabins
- ❖ Energy-saving light bulbs
- ❖ Showers with aerating showerheads that save water and energy
- ❖ Sinks with automatic faucets
- ❖ Upholstery from organic cotton for sofas and couches
- ❖ Bamboo bath mats, trash cans, and toothbrush holders (single-use)
- ❖ Chemical-free, 100% organic toiletries
- ❖ Plastic-free rooms
- ❖ Toilet paper from recycled material
- ❖ Information on responsible tourism practices available in all rooms
- ❖ Information on activities associated with the 17 Sustainable Development Goals available in all rooms
- ❖ Information on the food and food waste practices of the restaurant available in all rooms
- ❖ Bicycle available in each room
- ❖ Guests are encouraged to have linen and towels changed only as needed with a sign that says “put this sign on your bed before leaving if you need to have your towel or bed sheets changed.”
- ❖ All rooms are equipped with compos bins. Guests are encouraged to recycle.
- ❖ All rooms are equipped with water glasses or ceramic mugs; no plastic bottles are used.
- ❖ Cloth napkins are used instead of paper towels and tissues (to be washed together with towels and linens).
- ❖ Plates, cups, and cutlery made of biodegradable materials
- ❖ Air conditioning switches off immediately when guests close the door on their way out.
- ❖ Key cards are used to switch on the lights.
- ❖ Vegetarian and vegan options available at the restaurant, room service, or breakfast corners





❖ **MENUS**

We cook what is in season; we change menu items four times a year. We also have daily specials to serve the freshest food possible and minimize waste.

We source products locally, and we partner only with suppliers and family-oriented businesses that follow sustainable practices.

We have a waste reduction policy in place. We follow practices that reduce waste to almost zero, such as strict inventories and expiration date controls, as well as responsible purchasing. In addition, we work with charitable organizations to donate unconsumed food to people in need.

❖ **RECLAIMED WOOD DECOR**

Most décor elements and loose furniture are made from reclaimed wood and other natural materials.

❖ **ENERGY-SAVING POLICY**

Our kitchen equipment, dining areas, and restrooms are water-saving and energy-efficient.

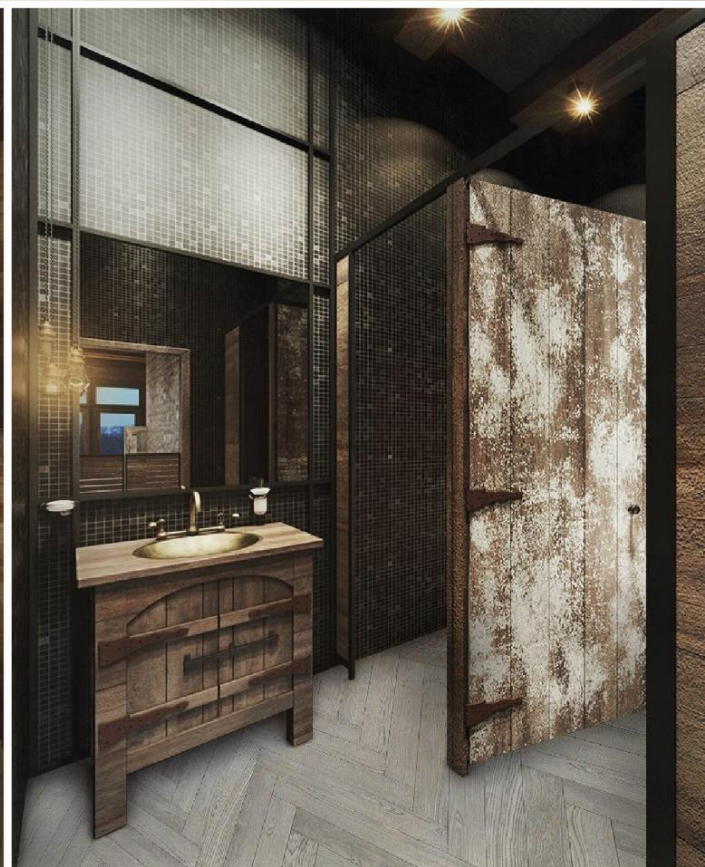
❖ **CLEANING**

To protect the environment and our guests' health, we use chemical-free products for cleaning.

❖ **TEAM**

All our team members understand and follow sustainable practices while providing high-quality services.





Contact us

Whatsapp: +852 9458 3366

Email: [mkt@lotusandjasmine.com](mailto:mkt@lotusandjasmine.com)



Lotus & Jasmine